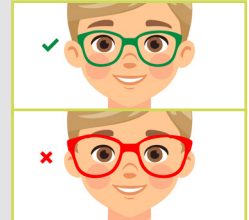


FITTING GUIDE

FITTING STEPS: BEFORE ORDERING THE LENSES

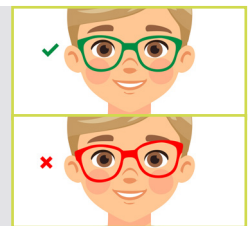
STEP 1

Choose a frame with the right proportions to ensure a proper fit on the child's face, avoiding one that is too big or too small.



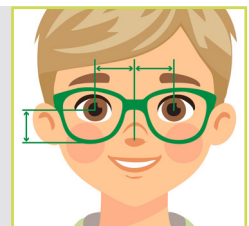
STEP 2

Adjust the frame before taking the measurements ensuring that the nose pads or bridge provide comfort, the temple length and tips fit well behind the ears, and the frame is properly aligned and sits horizontally when worn.



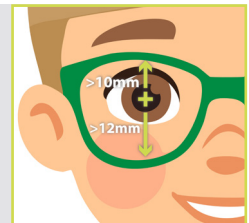
STEP 3

Measure precisely the monocular pupillary distance and fitting heights in the plane of the frame. The patient should be in a natural position with the dispenser at the same level.



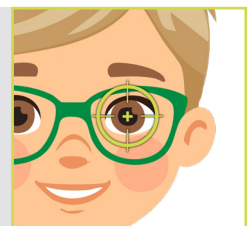
STEP 4

Check there is a minimum fitting height of 12mm and a minimum of 10mm above pupil to ensure the patient's comfort.



STEP 5

It is recommended to double-check the pupil position to avoid centration errors.



FITTING GUIDE

MOUNTING CHECK: WHEN DELIVERING TO THE PATIENT

STEP 1

Adjust the frame as best as possible to minimise any possible fitting errors checking that the frame is properly aligned and leveled and maintain an appropriate pantoscopic angle (typically between 6° and 12°, depending on the design).

STEP 2

Ensure that the temples are well-aligned and adjusted behind the ears, and that the nose pads are correctly positioned to prevent slipping or excessive pressure.

STEP 3

Check that fitting cross is aligned perfectly with the patient's pupil's center with a decentration lower than 1mm.

STEP 4

Make sure the frame provides a secure and comfortable fit. If needed, consider options with silicone nose pads, non-slip temple tips, or straps for added stability.

